



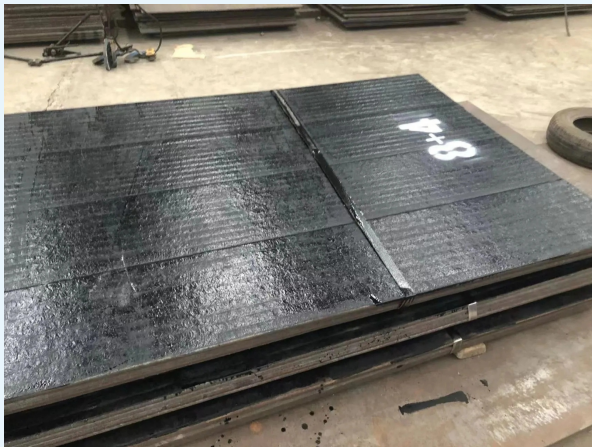
WEARTECH FUSION PVT.LTD.

An ISO 9001:2015 Certified Company

CHROMIUM CARBIDE OVERLAY (CCO) PLATES & PARTS MANUFACTURER AND EXPORTER

***YOUR ABRASION AND IMPACT
RESISTANT SOLUTIONS PARTNER***

Liner Wear Plate



Zig Zag Wear Plate



**COMPUTERIZED NUMERICAL MANUFACTURING FOR
CONTROLLED, CONSISTENT AND UNIFORM MICRO STRUCTURE
AND QUALITY TO PREVENT EXCESSIVE AND PREMATURE WEAR
IN ORDER TO PROLONG THE LIFE EXPECTANCY OF A
MACHINERY PART OR COMPONENT**



www.wearalloytechnologies.com

info@weartechfusion.com

GSTIN : 24AACCW7535R1ZN

CIN No. : U27109GJ2020PTC116697

Plot No.: B 1/13, Road No. 9, Hojiwala Industrial Estate,
Sachin, Surat - 394230, Gujarat, India



WEARTECH FUSION PVT.LTD.

An ISO 9001:2015 Certified Company

CHROMIUM CARBIDE OVERLAY (CCO) PLATES & PARTS MANUFACTURER AND EXPORTER

About Wear Alloy Technologies

- We, **WEARTECH FUSION PVT LTD**, a young and noted manufacturing organization incorporated (CIN No.: U27109GJ2020PTC116697) in the year 2020 under the Brand Name **WEAR ALLOY TECHNOLOGIES** are the leading manufacturer and exporter of Chromium Carbide Overlay (CCO) Plates and Parts.
- We provide wear solution for core sector industries like Cement, Steel, Power, Mining etc by overlying / cladding chromium carbide on IS:2062 Grade Mild Steel Plate to enhance the life of original system.
- We supply the Abrasion / Impact / Erosion Resistance CCO Plates and Parts in any required size & shape. CCO plates are available in 1350 mm x 3000 mm and in cut size also as per the client's requirement.
- We maintain thickness of CCO Plates as 5+3 mm, 6+4 mm, 6+6 mm, 8+4 mm, 8+5 mm, 10+4 mm, 10+6 mm, 12+4 mm, 16+4 mm or as per the clients's requirement.
- We maintain Hardness of CCO Plates Surface - 55 HRC to 67 HRC.
- We fabricate CCO plates to parts of different size and shape as per client's requirement.

Available CCO Plate Grades

Grades	Alloying Elements	Description	Hardness
WAT ECO	Cr, C, Mn	Suitable for all mild abrasion & impact	55-57 HRC
WAT STD	Cr, C, Mn, Si, B	Suitable for moderate abrasion & impact	58-60 HRC
WAT PR	Cr, C, Mn, Si, B, W, V	Suitable for resistant of high abrasion and moderate pressure & impact	61-62 HRC
WAT ER	Cr, C, Mn, Si, W, Nb	Suitable for resistant of high abrasion and pressure & impact	63-65 HRC
WAT HT	Cr, C, Mn, Si, W, Nb, Mo	Suitable for high abrasion / impact and high temperature up to 600 deg Celsius	66-67 HRC



WEARTECH FUSION PVT.LTD.

An ISO 9001:2015 Certified Company

CHROMIUM CARBIDE OVERLAY (CCO) PLATES & PARTS MANUFACTURER AND EXPORTER

Our Machinery



CNC Plate Welding Machine

Working Size : 3300 mm x 2000 mm; 4000 mm x 4000 mm

CNC Pipe Welding Machine

Working Size : Length- 6000 mm
Diameter - 100 mm to 250 mm



CNC Plasma & Oxy Fuel Cutting Machine

Working Size : 3500 mm x 1800 mm

Hydraulic Press Machine

Working Width : 2500 mm
M. S. Plate Bending up to 40 mm
Wear Plate Bending up to 25 mm



Manual Plate Rolling Machine

Working Width : 1850 mm
M. S. Plate Bending up to 25 mm
Wear Plate Bending up to 20 mm



WEARTECH FUSION PVT.LTD.

An ISO 9001:2015 Certified Company

CHROMIUM CARBIDE OVERLAY (CCO) PLATES & PARTS MANUFACTURER AND EXPORTER

Our Prodcuts

Transition Cone



Cone



Dish End



S. S. Plate Bending



S. S. Ring



Hardox Plate Bending



Angle Rolling



Small Diameter Pipe





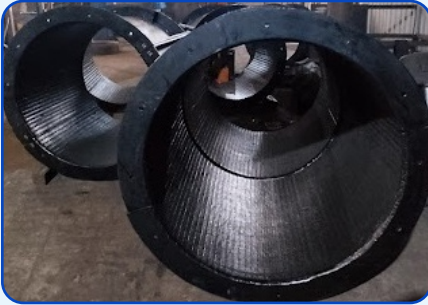
WEARTECH FUSION PVT.LTD.

An ISO 9001:2015 Certified Company

CHROMIUM CARBIDE OVERLAY (CCO) PLATES & PARTS MANUFACTURER AND EXPORTER

Our Prodcuts

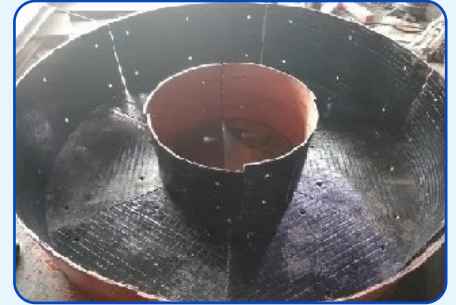
Center Feed Pipe



Protection Ring



Wear Liners



Static Guide Vanes



Venting Duct



Cutting Blade



Hopper



VRM Grit Cone



Wear Cover & Wear Ring



Cage Wheel Rotor Fins / Blades



Cement Mill Louvers





WEARTECH FUSION PVT.LTD.

An ISO 9001:2015 Certified Company

CHROMIUM CARBIDE OVERLAY (CCO) PLATES & PARTS MANUFACTURER AND EXPORTER

Application of Wear Plates

Cement Plant	Steel Plant	Mines	Power Plant
Chute, Hopper Liners, Grit Cone, guide Vanes, Pipe Segements, Bellows, Clinker Liners, Cyclone Fan Blade Liners, Crusher, etc.	Chute, Hopper Liners, Feed Pipes, Elbow, Ducts, Pipe Lines, Conveyor System, BLT Chutes, Roller, Sinter Screen, etc.	Bucket Liner, Shovel Dipper Plate, Grizzly Bars, Buckets Tooth Cutting Edge, Concrete Mixture, Conveyor system, etc.	Fan Blades, Hopper Liners, Chute Liners, Coal Crusher Liners, Mill Liner Parts, Ash Pipe / Elbow, Boilers, Ash Handling, etc

Our Clients

